

DEPARTMENT OF THE ARMY TECHNICAL MANUAL

**GENERAL SUPPORT MAINTENANCE REPAIR PARTS AND
SPECIAL TOOLS LISTS (INCLUDING DEPOT MAINTENANCE
REPAIR PARTS AND SPECIAL TOOLS)
TEST SET, TRANSFORMER BOARD TS-1703/ASN
(FSN 6625-886-5913)**

Headquarters, Department of the Army, Washington, DC
16 December 1974

Current as of 2 October 1974

	Paragraph	Page
Section I. Introduction		
Scope.....	1-1	2
General.....	1-2	2
Explanation of columns.....	1-3	2
Special information.....	1-4	4
Location of repair parts.....	1-5	4
Abbreviations (Not applicable).....	1-6	4
Reporting of equipment publication improvements.....	1-7	4
II. REPAIR PARTS LIST.....		6
III. SPECIAL TOOLS, TEST AND SUPPORT EQUIPMENT (Not applicable)		
IV. INDEX-FEDERAL STOCK NUMBER AND REFERENCE NUMBER CROSS- REFERENCE TO FIGURE AND ITEM NUMBER.....		11

*This manual supersedes TM 11-6625-507-45P, 30 August 1963.

SECTION I INTRODUCTION

1-1. Scope

This manual lists repair parts and special tools required for the performance of general support and depot maintenance of the TS-1703/ASN. The PCCN for the TS-1703/ASN is GANACW for all models.

NOTE

No parts authorized for stockage at direct support.

1-2. General

This repair parts and special tools list is divided into the following sections:

a. Repair Parts List - Section II. A list of repair parts authorized for the performance of maintenance at the direct support, general support, and depot level. This repair parts list is arranged in alphabetical order.

b. Special Tools, Test and Support Equipment -Section III. Not applicable.

c. Index -Federal Stock Number and Reference Number Cross-Reference to Figure and Item Number - Section IV. A list, in ascending numerical sequence, of all Federal stock numbers appearing in the listings, followed by a list, in alphanumeric sequence, of all reference numbers appearing in the listings. Federal stock number and reference numbers are cross-referenced to each illustration figure and item number or reference designation appearance.

1-3. Explanation of Columns

The following provides an explanation of columns found in the tabular list.

a. Source, Maintenance, and Recoverability Codes (SMR).

(1) *Source code.* Indicates the manner of acquiring support items for maintenance, repair, or overhaul of end items. Source codes are:

<i>Code</i>	<i>Explanation</i>
P A -	Item procured and stocked for anticipated or known usage.
P B -	Item procured and stocked for insurance purposes because essentiality dictates that a minimum quantity be available in the supply systems.
P C -	Item procured and stocked and which otherwise would be coded PA except that it is deteriorative in nature.
P D -	Support item, excluding support equipment, procured for initial issue or outfitting and

<i>Code</i>	<i>Explanation</i>
	stocked only for subsequent or additional initial issues or outfittings. Not subject to automatic replenishment.
P E -	Support equipment procured and stocked for initial issue or outfitting to specified maintenance repair activities.
P F -	Support equipment which will not be stocked but which will be centrally procured on demand.
PG -	Item procured and stocked to provide for sustained support for the life of the equipment. It is applied to an item peculiar to the equipment which because of probable discontinuance or shutdown of production facilities would prove uneconomical to reproduce at a later time.
KD -	An item of depot overhaul/repair kit and not purchased separately. Depot kit defined as a kit that provides items required at the time of overhaul or repair.
KF -	An item of a maintenance kit and not purchased separately. Maintenance kit defined as a kit that provides an item that can be replaced at organizational or direct support or general support levels of maintenance.
K B -	Item included in both a depot overhaul/repair kit and a maintenance kit.
M O -	Item to be manufactured or fabricated at organizational level.
M F -	Item to be manufactured or fabricated at direct support maintenance level.
M H -	Item to be manufactured or fabricated at general support maintenance level.
M D -	Item to be manufactured or fabricated at depot maintenance level.
A O -	Item to be assembled at organizational level.
A F -	Item to be assembled at direct support maintenance level.
A H -	Item to be assembled at general support maintenance level.
A D -	Item to be assembled at depot maintenance level.
X A -	Item is not procured or stocked because the requirements for the item will result in the replacement of the next higher assembly.
X B -	Item is not procured or stocked. If not available through salvage, requisition.
XC -	Installation drawing, diagram instruction

Code

EExplanation

sheet, field service drawing, that is identified by manufacturers' part number.
 X D - Support items can be requisitioned with justification.

NOTE

Cannibalization or salvage may be used as a source of supply for any items source coded above except those coded XA and aircraft support items as restricted by AR 700-42.

(2) **Maintenance code.** Maintenance codes are assigned to indicate the levels of maintenance authorized to USE and REPAIR support items. The maintenance codes are entered in the third and fourth positions of the Uniform SMR Code format as follows:

(a) Use (third position). The maintenance code entered in the third position indicates the lowest maintenance level authorized to remove, replace, and use the support item. The maintenance code entered in the third position indicates one of the following levels of maintenance.

Code Application/Explanation

O - Support item is removed, replaced, used at the organizational level of maintenance.

NOTE

A code "C" may be used in this position to denote crew or operator maintenance performed within organizational maintenance.

F - Support item is removed, replaced, used at the direct support maintenance level.

H - Support item is removed, replaced, used at the general support maintenance.

D - Support items that are removed, replaced, used at depot only.

(b) Repair (*fourth* position). The maintenance code entered in the fourth position Indicates whether the item is to be repaired and identifies the lowest maintenance level with the capability to perform complete repair (i.e., all authorized maintenance functions). When a maintenance code is not used a dash (-) sign is entered. For multi service equipment/systems or when a code is entered, this position will contain one of the following maintenance codes as assigned by the service(s) that require the code:

Code Application/Explanation

O - The lowest maintenance level capable of complete repair of the support item is the organizational level.

F - The lowest maintenance level capable of complete repair of the support item is

Code Application/Explanation

direct support.

H - The lowest maintenance level capable of complete repair of the support item is general support.

D - The lowest maintenance level capable of complete repair of the support item is the depot level.

L - Repair restricted to designated Specialized Repair Activity.

Z - Non-repairable. No repair is authorized.

B - No repair is authorized. The item may be reconditioned by adjusting, lubricating, etc., at the user level. No parts or special tools are procured for the maintenance of this item.

(3) Recoverability code. Recoverability codes are assigned to support items to indicate the disposition action on unserviceable items. The recoverability code is entered in the fifth position of the Uniform SMR Code format as follows:

Code Explanation

Z - Nonrepairable item. When unserviceable, condemn and dispose at the level indicated in the first digit of the maintenance code.

O - Repairable item. When uneconomically repairable, condemn and dispose at organizational level.

F - Repairable item. When uneconomically repairable, condemn and dispose at the direct support level.

H - Repairable item. When uneconomically repairable, condemn and dispose at the general support level.

D - Repairable item. When beyond lower level repair capability, return to depot. Condemnation and disposal not authorized below depot level.

L - Repairable item. Repair, condemnation, and disposal not authorized below depot/Specialized Repair Activity level.

A - em requires special handling or condemnation procedures because of specific reasons (i.e., precious metal content, high dollar value, critical material or hazardous material).

b. **Federal Stock Number.** Indicates the Federal stock number assigned to the item.

NOTE

For requisitioning purposes, the Federal stock number must be converted to the National stock number by adding "-00-" after the Federal stock classification (FSC) code

(first four digits). For example, FSN 6625 553-0142 converts to NSN 6625-00-553-0142.

c. Description. Indicates the Federal item name and a minimum description required to identify the item. The last line indicates the reference number followed by the applicable Federal Supply Code for Manufacturer (FSCM) in parentheses. The FSCM is used as an element in item identification to designate manufacturer or distributor or Government agency, etc., and is identified in SB 708-42.

d. Unit of Measure (U/M). Indicates the standard or basic quantity by which the listed item is used in performing the actual maintenance function. This measure is expressed by a two-character alphabetical abbreviation; e.g., ea, in, pr, etc., and is the basis used to indicate quantities and allowances in subsequent columns. When the unit of measure differs from the unit of issue, the lowest unit of issue that will satisfy the required units of measure will be requisitioned.

e. Quality Incorporated in Unit. This column indicates the quantity of the item used in the equipment. Subsequent appearances of the same item in the same assembly are indicated by the letters "REF".

f. 30-Day DS/GS Maintenance Allowances.

NOTE

Allowances in GS column are for GS maintenance only.

(1) The repair parts indicated by asterisk entries in separate allowance columns for DS and GS represent those authorized for use at that category of maintenance to be requisitioned on an "as required" basis, until stockage is based on demand in accordance with AR 710-2.

(2) Allowance quantities are indicated in the special tool lists section for special tools, TMDE, and other support equipment.

g. 1-year Allowances Per 100 Equipments/Contingency Plumbing Purposes. Column intentionally left blank.

h. Depot Maintenance Allowance Per 100 Equipments. This column indicates opposite the first appearance of each item the total quantity authorized for depot maintenance of 100 equipments.

i. Illustration. This column is divided as follows:

(1) *Figure number.* Indicates the figure number of the illustration on which the item is shown in TM 11-6625-507-34.

(2) *Item number.* Indicates the item number or reference designation used to reference the item in the illustration.

1-4. Special Information

a. Usable on codes are included in column 3.

Uncoded items are applicable to all models. Identification of the usable on codes used in this publication are:

cook	<i>Used on</i>
A81	TS-1703/ASN

b. The following publication pertains to the TS-1703/ASN and its components:

TM 11-6625-507-34. Field Maintenance Manual:
Test Set, Transformer
Board TS-1703/ASN.

1-5. Location of Repair Parts

a. This manual contains one cross-reference index (sec IV) to be used to locate a repair part when either the Federal stock number or reference number (manufacturer's part number) is known. The first column in the index is prepared in numerical or alphanumeric sequence in ascending order. The reference numbers (manufacturer's part numbers) are listed immediately following the last listed Federal stock number in the index of Federal stock numbers.

b. When the Federal stock number or reference number is known, follow the procedures given in (1) and (2) below.

(1) Refer to the index of Federal stock numbers (sec IV) and locate the Federal stock number or reference number. The FSN and reference number are cross-referenced to the applicable figure and item number or reference designation.

(2) Refer to the repair parts list (sec II) and locate the figure number (col 10a) and item number or reference designation (col 10b) as noted in the FSN index.

c. When the figure and item number or reference designation are known, scrutinize columns 10a and 10b of the repair parts list (see II) until the item is located.

d. When the FSN, reference number, figure number, item number and reference designation are not known, scrutinize column 3 of the repair parts list (sec II), which is arranged in alphabetical order.

1-6. Abbreviations

Not applicable.

1-7. Reporting of Equipment Publication Improvements

The reporting of errors, omissions, and recommendations for improving this his publication by the individual user is encouraged Reports should be submitted on DA Form 2028 (Recommended Changes to Publications and Blank Forms) and forwarded direct to Commander, US Army Electronics Command, ATTN: AMSEL-MA-AN, Fort Monmouth, NJ07703.

(Next printed page is 6)

SECTION II

SMR CODE	FEDERAL STOCK NUMBER	DESCRIPTION REFERENCE NUMBER & MFR. CODE USABLE ON CODE	(4) UNIT OF MEAS	(5) QTY INC IN UNIT	(6) 30-DAY DS MAINT ALLOWANCE			(7) 30-DAY GS MAINT ALLOWANCE			(8) 1-YR ALW PER 100 EQUIP CNTG	(9) DEPOT MAINT ALW PER 100 EQUIP	(10) ILLUSTRATION	
					(a)	(b)	(c)	(a)	(b)	(c)			(a)	(b)
					1-20	21-50	51-100	1-20	21-50	51-100			FIGURE NO	ITEM NO.
XDOZZ		AMMETR M2 PANEL TYPE, DC 100 TO TO 100, 50 SCALE DIV, PURM 20 PCT ACCURACY AT FULL SCALE DEFLECTION 992558-01 (35351)	EA	1				*	*	*			2	M2
PAHZZ	6145-260-8795	CABLE, POWER NO-REF-DESIG 9 FEET LONG... DHOF3C915 (81349)	EA	1				*	*	*		3		
PAHZZ	6145-260-8805	CABLE, POWER NO-REF-DESI 9G 9 FEET LONG... FHOF3C9 (81349)	EA	1				*	*	*		3		
PAHZZ	5910-382-4793	CAPACITOR, FIXED, ELECTROLYTIC C4 60UF PORM5PCT, 50 VDC 0.578 IN DIA X 0.765 Lb CL65CJ600RP (813491)	EA	1				*	*	*			3	C4
XDOZZ		CAPACITOR, FIXED, MICA DIELECTRIC C3... 40,000 UUF, PORM2PCT, 600 VDC, 1.125 IN DEEP x 0.438 IN 1 X 1.250 IN WD 1445R8, (00656)	EA	4				*	*	*			3	C3
XDOZZ		CAPACROR, FIXED, MICA DIELECTRIC C5... 40,000 UUF, PORM2PCT, 600 VDC, 1.125 IN DEEP X 0.438 IN 1 X 1.250 IN WD 1445RB (00656)	EA	REF				*	*	*			3	C5
XDOZZ		CAPACITOR, FIXED, MICA DIELECTRIC C6... 40,000 UUF, PORM2PCT 600 VDC 1.125 IN DEEP X 0.438 IN 1 X 1.250 IN WD 1445RB (00656)	EA	REF				*	*	*			3	C6
XDOZZ		CAPACITOR, FIXED, MICA DIELECTRIC C7... 40,000 UUF, PORM2PCT, 600 VDC, 1.125 IN DEEP X 0.438 IN 1 X 1.250 IN WD 1445RB (00656)	EA	REF				*	*	*			3	C7
XDOZZ		CAPACITOR, FIXED, PAPER DIELECTRIC CL... A SECT, 300 VDC, 680,000 UUF, PORM2PCT, 0.750 IN DIA X 2.125 LG (993417-01 (35351)	EA	1				*	*	*			3	C2
PAHZZ	5910-171-2952	CAPACITOR, FIXED, PAPER DIELECTRIC C1... CP53131EB405K (81349)	EA	1				*	*	*		3	2	C1
PAHZZ	5935-557-9615	CONNECTOR, RECEPTACLE, ELECTRICAL P202... 14 CONT, 1.812 IN LG, x 0.484 IN W X 0.343 IN H (KM14SM (8312)	EA	1				*	*	*		3	8	P202
XDOZZ		CONNECTOR, RECEPTACLE, ELECTRICAL P201... 14 CONT, 1.812 IN LG, X 0.484 IN W X 0.343 IN H KM14SN (8312)	EA	1				*	*	*				P201
PAHZZ	5950-603-9361	DUMMY LOAD, ELECTRICAL L1 380 TO 420... CPS OPERATING FREQ RANGE, 1.500 IN LG X 1.000 WD X 2.000 IN H 990839-01 (31435)	EA	1				*	*	*		3	2	L1
PACZZ	5920-281-0205	FUSE, CARTRIDGE F1..... MS90078-19 (81349)	EA	3				*	*	*		50	3	F1
PACZZ	5920-281-0205	FUSE, CARTRIDGE F2..... MS90078-19 (81349)	EA	REF				*	*	*			3	F2
PACZZ	5920-281-0205	FUSE, CARTRIDGE F3..... 3590078-19 4 (81349)	EA	REF				*	*	*			3	F3
PACZZ	5920-504-8634	FUSE CARTRIDGE F4..... MS90078-20 (81349)	EA	1				*	*	*		50	3	F4

TM11-6625-507-40P

(1) SMR CODE	FEDERAL STOCK NUMBER	DESCRIPTION REFERENCE NUMBER & MFR. CODE USABLE ON CODE	(4) UNIT OF MEAS	(5) QTY INC IN UNIT	(6) 30-DAY DS MAINT ALLOWANCE			(7) 30-DAY GS MAINT ALLOWANCE			(8) 1-YR ALW PER 100 EQUIP CNTGCY	(9) DEPOT MAINT ALW PER 100 EQUIP	(10) ILLUSTRATION	
					(a)	(b)	(c)	(a)	(b)	(c)			(a)	(b)
					1-20	21-50	51-100	1-20	21-50	51-100			FIGURE NO.	ITEM NO.
PACZZ	5920-280-4252	FUSEHOLDER XF1 IN-THE-LINE TYPE, 250V, CARTRIDGE TYPE, 1.250 IN LG, X 0.250 IN DIA HKPHJWRZ (71400)	EA	4				*	*	*		3	3	XF1
PACZZ	5920-280-4252	FUSEHOLDER XF2 IN-THE-LINE TYPE, 250V, CARTRIDGE TYPE, 1.250 IN LG, X 0.250 IN DIA HKPHJWRZ (71400)	EA	REF				*	*	*			3	XF2
PACZZ	5923-280-4252	FUSEHOLDER XF3 IN-THE-LINE TYPE, 250V, CARTRIDGE TYPE, 1.250 IN LG, X 0.250 IN DIA HKPHJWRZ (71400)	EA	REF				*	*	*			3	XF3
PACZZ	5920-280-4252	FUSEHOLDER XF4 IN-THE-LINE TYPE, 250V, CARTRIDGE TYPE, 1.250 IN LG, X 0.250 IN DIA HKPHJWRZ (71400)	EA	REF				*	*	*			3	XF4
PAHZZ	5935-578-4298	JACK, TIP E3 NYLON BLACK, 29/32 IN LG, X 3/8 IN DIA SMC 110027-4 (80063)	EA	1				*	*	*		1	2	E3
PAHZZ	5935-258-7852	JACK, TIP E1 NYLON RED, 29/32 IN LG, X 3/8 IN DIA CP35-1-19-01 (25500)	EA	2				*	*	*		1	2	E1
PAHZZ	5935-258-7852	JACK, TIP E2 NYLON RED, 29/32 IN LG, X 3/8 IN DIA CP35-1-19-01 (25500)	EA	REF				*	*	*			2	E2
XDOZZ		KNOB NO-REF-DESIG SETSCREW TYPE, 2.062 IN OD, X 0.875 IN THK O/A 20114 (83330)	EA	2				*	*	*				
PACZZ	5355-160-6893	KNOB NO-REF-DESIG SETSCREW TYPE, 1.125 IN OD, X 0.625 IN THK O/A S300-64BBDD (73376)	EA	1				*	*	*		3		
PACZZ	6240-682-3411	LAMP, GLOW DS1 NEON GAS, 1/4 W, T-3-1/4 82A (08108)	EA	1				*	*	*		100	3	DS1
PACZZ	6240-155-7836	LAMP, INCANDESCENT DS2 MS25237-327 (81349)	EA	1				*	*	*		50	3	DS2
PAHZZ	6210-681-1669	LIGHT INDICATOR XDS2 W/RED LENS, 1.358 IN LG, X 0.593 IN DIA 134-5030-035-201 (72619)	EA	1				*	*	*		5	3	XDS2
PAHZZ	6210-989-9884	LIGHT INDICATOR XDS1 W/CLEAR LENS, 1.656 IN LG, X 0.812 IN DIA LH77-2 (81349)	EA	1				*	*	*		5	3	XDS1
PAHZZ	5940-269-2219	POST, BINDING E9 BLACK, PLASTIC W/SCREW ACTION PB01FA04 (81349)	EA	3				*	*	*		1	8	E9
PAHZZ	5940-269-2219	POST, BINDING E11 BLACK, PLASTIC W/SCREW ACTION PB01FA04 (81349)	EA	REF				*	*	*			3	E11
PAHZZ	5343-269-2219	POST, BINDING E13 BLACK, PLASTIC W/SCREW ACTION PB01FA04 (81349)	EA	REF				*	*	*			3	E13
PAHZZ	5940-356-2493	POST, BINDING E4 RED, PLASTIC W/SCREW ACTION CONTINUED	EA	7				*	*	*		1	3	E4

SECTION	SMR CODE	FEDERAL STOCK NUMBER	(3) DESCRIPTION REFERENCE NUMBER & MFR. CODE	USABLE ON CODE	(4) UNIT OF MEAS	(5) QTY INC IN UNIT	(6) 30-DAY DS MAINT ALLOWANCE			(7) 30-DAY GS MAINT ALLOWANCE			(8) 1-YR ALW PER 100 EQUIP CNTGCV	(9) DEPOT MAINT ALW PER 100 EQUIP	(10) ILLUSTRATION	
							(a)	(b)	(c)	(a)	(b)	(c)			(a)	(b)
							1-20	21-50	51-100	1-20	21-50	51-100			FIGURE NO.	ITEM NO.
			CONTINUED													
PAHZZ	5940-356-2493		ACTION PB01FO3 (81349) POST, BINDING	E5 RED, PLASTIC W/SCREW.	EA	REF				*	*	*			3	E5
PAHZZ	5940-356-2493		ACTION PB01FO3 (81349) POST, BINDING	E 6 RED, PLASTIC W/SCREW.	EA	REF				*	*	*			3	E6
PAHZZ	5940-356-2493		ACTION PB01FO3 (81349) POST, BINDING	E7 RED, PLASTIC W/SCREW.	EA	REF				*	*	*			3	E7
PAHZZ	5940-356-2493		ACTION PB01FO3 (81349) POST, BINDING	Ed RED, PLASTIC W/SCREW.	EA	REF				*	*	*			3	E8
PAHZZ	5943-356-2493		ACTION PB01FO3 (81349) POST, BINDING	E10 RED, PLASTIC W/SCREW.	EA	REF				*	*	*			3	E10
PAHZZ	5940-356-2493		ACTION PB01FO3 (81349) POST, BINDING	E12 RED, PLASTIC W/SCREW.	EA	REF				*	*	*			3	E12
PAHZZ	5950-578-1051		ACTION PB01FO3 (81349) REACTOR L2 FIXED, 1 COIL, 2 HENRY. 55. MA DC, 160 OHM RES, 2,000 IN H X 1.198 IN LG X 1.198 IN WD 4RH255 (80089)		EA	1				*	*	*	2	2	2	L2
XDOZZ			RESISTOR, FIXED, FILM R11 150 OHM..... PORM1PCT, 1/2W, 0.812 IN LG X 0.172 IN OD 126005-75 (35351)		EA	2				*	*	*			3	R11
XDOZZ			RESISTOR, FIXED, FILM R12 150 OHM..... PORM1PCT, 1/2W, 0.812 IN LG X 0.172 IN OD 126005-75 (35351)		EA	REF				*	*	*			3	R12
XDOZZ			RESISTOR, FIXED, FILM R10 422 OHM..... PORM1PCY, 1/2 W, 0.594 IN LG X 0.172 IN OD 126005-583 (35351)		EA	2				*	*	*			3	R10
XDOZZ			RESISTOR, FIXED, FILM R13 422 OHM..... PORM1PCT, 1/2 W, 0.594 IN LG X 0.172 IN OD 126005-583 (35351)		EA	REF				*	*	*			3	R13
XDOZZ			RESISTOR, FIXED, FILM R7 196,000 OHM.. PORM1PCT, 1/2W, 0.594 IN LG X 0.172 IN OD 126005-654 (35351)		EA	1				*	*	*			3	R7
XDOZZ			RESISTOR, FIXED, FILM R1 500.000 OHM.. PORM1PCT, 1/2W, 0.500 LG X 0.156 OD		EA	1				*	*	*			3	R1
PAHZZ	5905-552-2447		RESISTOR, FIXED, FILM R16..... 75B1002F (81349)		EA	2				*	*	*	3	3	3	R16
PAHZZ	5905-552-2447		RESISTOR, FIXED, FILM R17..... 75B1002F (81349)		EA	REF				*	*	*			3	R17
PAHZZ	5905-552-3900		RESISTOR, FIXED, FILM R18..... RN75B2492F (81349)		EA	2				*	*	*	3	3	3	R18
PAHZZ	5905-552-3900		RESISTOR, FIXED, FILM R19..... RN75B2492F (81349)		EA	REF				*	*	*			3	R19

SECTION	II	(3)	DESCRIPTION	(4) UNIT OF MEAS	(5) QTY INC IN UNIT	(6) 30-DAY DS MAINT ALLOWANCE			(7) 30-DAY GS MAINT ALLOWANCE			(8) 1-YR ALW PER 100 EQUIP CNTGCT	(9) DEPOT MAINT ALW PER 100 EQUIP	(10) ILLUSTRATION	
						(a)	(b)	(c)	(a)	(b)	(c)			(a)	(b)
						1-20	21-50	51-100	1-20	21-50	51-100			FIGURE NO.	ITEM NO.
XDOZZ			RESISTOR, FIXED FILM R15..... RN758372F (81349)	EA	1				*	*	*			3	R15
PAHZZ	5905-577-7340		RESISTOR, VARIABLE R9 300 OHM..... PORM5PCT, 2W, 1.156 IN DIA, X 0.625 IN DEEP	EA	1				*	*	*		3	3	R9
PAHZZ	5905-665-6082		RESISTOR, VARIABLE R14 300 OHM..... RA20LASB35A (81349) PORM10PCT, 2W, 1.125 DIA X 0.593 DEEP	EA	1				*	*	*		3	2	R14
XDOZZ			RESISTOR, FIXED, WIRE WOUND R2 5 OHM..... PORM1PCT, 2W, 0.812 IN LG X 0.188 IN DIA	EA	1				*	*	*			3	R2
XDOZZ			RESISTOR, FIXED, WIRE WOUND R3 97 OHM..... PORM1PCT, 2W, 0.812 IN LG. X 0.188 IN DIA	EA	1				*	*	*			3	R3
XDOZZ			RESISTOR, FIXED, WIRE WOUND R6 650 OHM..... PORM1PCT, 2W, 0.812 IN LG X 0.188 IN DIA	EA	1				*	*	*			3	R6
PAHZZ	5905-905-6968		RESISTOR, FIXED, WIRE WOUND R8 806 OHM..... PORM1PCT, 5W, 0.812 IN LG X 0.188 IN DIA	EA	1				*	*	*		3	3	R8
XDOZZ			RESISTOR, FIXED, WIRE WOUND R4 5000..... OHM PORM1PCT, 2W, 0.812 IN LG X 0.188 IN DIA	EA	2				*	*	*			3	R4
XDOZZ			RESISTOR, FIXED, WIRE WOUND R5 5000..... OHM PORM1PCT, 2W, 0.812 IN LG X 0.188 IN DIA	EA	REF				*	*	*			3	R5
PAHZZ	5905-806-3715		RESISTOR, VARIABLE R20 50,000 OHM..... PORM2PCT, 8W, 2.438 IN D X 2.750 IN DIA	EA	1				*	*	*		3	2	R20
XDOZZ			SEMICONDUCTOR, DEVICE, DIODE CR1..... IN93A (81349)	EA	2				*	*	*			3	CR1
XDOZZ			SEMICONDUCTOR, DEVICE, DIODE CR2..... IN93A (81349)	EA	REF				*	*	*			3	CR2
XDOZZ			SHAFT, PHASE SHIFTER NO-REF-DESIG..... PLASTIC, 2.312 LG O/A X 0.375 IN DIA O/A	EA	1				*	*	*				
XDOZZ			SWITCH, TCH, LEVER S3 3 POS, LAMP, 125V..... 990860-02 (35351)	EA	1				*	*	*			2	S3
XDOZZ			SWITCH, ROTARY S4 9 SECT, 9 POS, 9..... POLSE, 16 THROWS, 2.312 IN H X 5.375 IN X	EA	1				*	*	*			2	S4
PAHZZ	5930-655-1514		SWITCH, TOGGLE S2..... 99252--01 (35351)	EA	1				*	*	*		5	3	S2
PAHZZ	5930-276-9282		SWITCH, TOGGLE S1 4 POLE SINGLE THROW..... 30 VDC, 125 VAC, 1.437 IN LG X 1.312 IN W, X 1.250 IN H	EA	1				*	*	*		5	3	S1
			SMD195263 (80063)												

SECTION II
(1)

(3)

SMR FEDERAL
CODE STOCK
NUMBER

DESCRIPTION

REFERENCE NUMBER & MFR. CODE USABLE ON CODE

(1)	(2)	(3)	(4)	(5)	(6)			(7)			(8)	(9)	(10)	
					30-DAY DS MAINT ALLOWANCE			30-DAY GS MAINT ALLOWANCE			1-YR ALW PER 100 EQUIP CNTGCV	DEPOT MAINT ALW PER 100 EQUIP	ILLUSTRATION	
					(a)	(b)	(c)	(a)	(b)	(c)			(a)	(b)
UNIT OF MEAS	QTY INC IN UNIT		1-20	21-50	51-100	1-20	21-50	51-100	FIGURE NO.	ITEM NO.				
PAHZZ	5950-578-5637	TRANSFORMER, ISOLATION T4 AUDIO FREQ.. 20 TO 20,000 CPS FREQ RANGE, 3.125 IN H X 2.312 IN LG X 2.062 IN WD 992398-01 (35351)	EA	2				*	*	*		3	2	T4
PAHZZ	5950-578-5637	TRANSFORMER, ISOLATION T5 AUDIO FREQ.. 20 TO 20,000 CPS FREQ RANGE, 3.125 IN H X 21.312 IN LG X 2.062 IN WD 992398-01 (35351)	EA	REF				*	*	*			2	T5
PAHZZ	5950-578-1124	TRANSFORMER, POWER, STEP-DOWN T2 PR1.. 200V, 400 CPS, 1 PHASE, SEC 100.8V 2.375 IN H X 1.625 SQ 990791-01 (35351)	EA	1				*	*	*		3	2	T2
PAHZZ	5950-578-1126	TRANSFORMER, POWER, STEP-DOWN T3 PR1.. 115V, 400 CPS 1 PHASE, SEC 100.8V, 2.375 IN H X 1.625 IN SQ 990790-01 (35351)	EA	1				*	*	*		3	2	T3
PAHZZ	5930-87-4863	TRANSFORMER VARIABLE TI 115 V, 350 TO 1200 CYC, 8.219 LG X 3.250 IN W, X 3.250	EA	1				*	*	*		3	2	T1
XDOZZ		992412-02 (35351) VOL TMETER M1 PANEL TYPE AC, 50 TO 550 CYCLES, 105 50 125 CW RANGE, 40 SCALE DIV, 0.6PCT, ACCURACY AT FULL SCALE DEFLECTION 741 (65092)	EA	1				*	*	*			2	M1

SECTION IV

TM11-6625-507-40P

INDEX - FEDERAL STOCK NUMBER AND REFERENCE NUMBER
CROSS-REFERENCE TO FIGURE AND ITEM NUMBER

STUCK NUMBER	FIGURE NO.	ITEM ND.	STOCK NUMBER	FIGURE NO.	ITEM NO.
5355-160-6893			5920-281-0205	3	F3
			5920-504-8634	3	F4
			5930-276-9282	3	S1
			5930-655-1514	3	S2
5905-532-2447	3	R16			
5905-552-2447	3	R17	5930-877-4863	2	T1
5905-552-3900	3	R18	5935-258-7852	2	E1
5905-552-3900	3	R19	5935-258-7852	2	E2
5905-577-7340	3	R9	5935-557-9615	8	P202
5905-665-6082	2	R14	5935-578-4298	2	E3
5905-806-3715	2	R20	5940-269-2219	3	E11
			5940-269-2219	3	E13
			5940-269-2219	8	E9
			5940-356-2493	3	E10
			5940-356-2493	3	E12
			5943-356-2493	3	E4
			5940-356-2493	3	E5
			5940-356-2493	3	E6
			5940-356-2493	3	E7
			5940-356-2493	3	E8
			5950-578-1051	2	L2
5905-905-6968	3	R8	5950-578-1124	2	T2
5910-082-4790	3	C4	5950-578-1126	2	T3
5910-171-2952	2	C1	5950-578-5637	2	T4
			5950-578-5637	2	T5
			5950-603-9361	2	L1
			6145-260-8795		
5920-280-4252		XF1	6145-260-8805		
5920-280-4252		XF2	6210-681-1669	3	XDS2
5920-280-4252		XF3	6210-989-9884	3	XDS1
5920-280-4252		XF4	6240-155-7836	3	DS2
5920-281-0205		F1	6240-682-3411	3	DS1
5920-281-0205		F2			

REFERENCE NO	MFR CODE	FIG. NO.	ITEM NO.	REFERENCE NO.	MFR CODE	FIG. NO.	ITEM NO.
CL650J600KP3	81349	3	C4	RN75B3742F	81349	3	R15
CP35-1-19-01	25500	2	E1	RS2A5-OOHM	91637	3	R2
CP35-1-19-01	25500	2	E2	RS2A502F	91637	3	R4
CP53131EB405R	81349	2	C1	RS2A502F	91637	3	R5
DHOF3C915	81349			RS2A650-OOHM	91637	3	R6
FROF3C915	81349			RS54-990HM	91637	3	R8
HKPHJWRZ	71400	3	XF1	SMC110027-4	80063	2	E3
HKPHJWRL	71400		XF2	SMD195263	80063	3	S1
HKPHJWRL	71400	3	XF3	S300-64BBDD	73376		
HKPHJWRL	71400	3	XF4	126005-430	35351	3	R1
IN93A	81349	3	CR1	126005-430	35351	3	R10
IN93A	81349	3	CR2	126005-583	35351	3	R13
K M 1 4 S M	81312	8	P202	126005-654	35351	3	R7
KMI4SN	81312	8	P201	126005-75	35351	3	R11
L H 7 7 - 2	81349	3	XDS1	126005-75	55351	3	R12
MS25237-327	81349	3	DS2	134-5030-035-201	72619	3	XDS2
MS35058-22	81349	3	S2	1445RB	00656	3	C3
MS90078-19	81349	3	F1	1445RB	30690	3	C5
MS90078-19	81349	3	FL	1445RB	00656	3	C6
MS90078-19	81349	3	F3	1445RB	00658	3	C7
MS90078-20	81349	3	F4	20114	83330		
PB01FA04	81349	3	E11	4RH255	80089	2	L2
PB01FA04	61349	3	E13	741	65092	2	M1
PB01FA04	81349	8	E9	75B1002F	(11349)	3	R16
PB01F03	81349	3	E4	75B1002F	81349	3	R17
PB01F03	81349	3	E5	8197-12	94197	2	R14
PB01F03	81349	3	E6	82A	08108	3	DS1
PB01F03	81349	3	E7	9750	24655	2	R20
PB01F03	81349	3	L8	990234-110	35351	2	S3
PB01F03	81349	3	E10	990446-96	35351	3	R3
PB01F03	81349	3	E12	990790-01	35351	2	T3
RA20LASB35A	81349	3	R9	990791-01	35351	2	T2
RN75B2492F	81349	3	R18	990839-01	31435	2	L1
RN75B2492F	81349	3	R19	990860-02	35351		

SECTION	V	TM11-6625-507-40P								
	REFERENCE NO.	MFR CODE	FIG. NO.	ITEM NO.	REFERENCE NO.	MFR CODE	FIG. NO.	ITEM NO.		
	992398-01	35351	2	T4	992522-01	35351				
	992398-01	35351		T5	992558-01	35351	S4	M2		
		35351	2	TI	993417-01	35351	3	C2		

By Order of the Secretary of the Army:

FRED C. WEYAND
General, United States Army
Chief of Staff

Official:

VERNE L. BOWERS
Major General, United States Army
The Adjutant General

Distribution:

To be distributed in accordance with DA Form 12-36, (qty rqr block no. 452) Direct and General Support requirements for MA-1.

* U.S. GOVERNMENT PRINTING OFFICE: 1974-665137/409

END

01-03-83

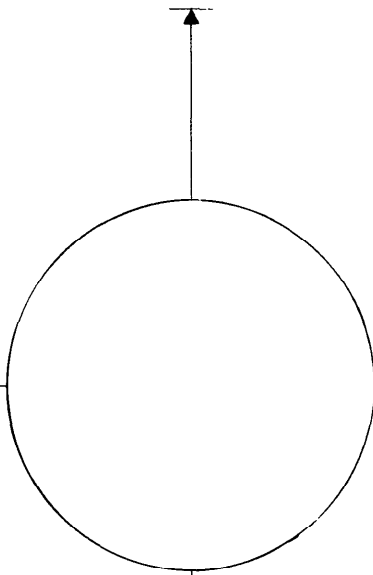
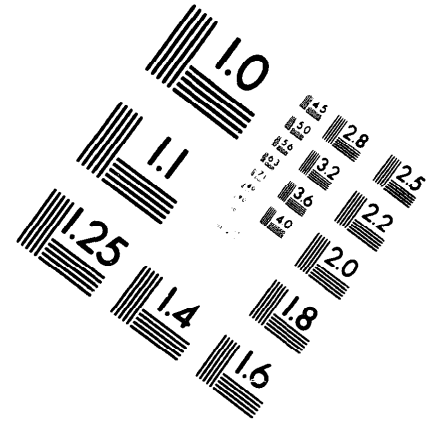
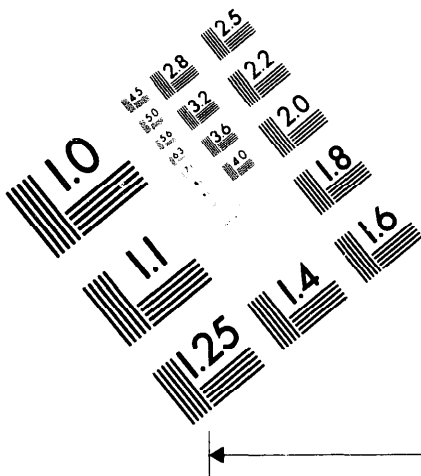
DATE





DEPARTMENT OF THE ARMY

MICROFORM
TEST TARGET



150 MM

1.0 mm (e= .81 mm)

ABCDEFGHIJKLMNQRSTUUVWXYZ1234567890
abcdefghijklmnopqrstuvwxyz\$c£/%# 1/2 1/4 3/4 —=+ x&@*

1.5 mm (e= 1.09 mm)

ABCDEFGHIJKLMNQRSTUUVWXYZ1234567890
abcdefghijklmnopqrstuvwxyz\$c£/%# 1/2 1/4 3/4 —=+ x&@*

2.0 mm (e= 1.37 mm)

ABCDEFGHIJKLMNQRSTUUVWXYZ
abcdefghijklmnopqrstuvwxyz
1234567890\$c£/%# 1/2 1/4 3/4 —=+ x&@*

2.5 mm (e= 1.77 mm)

ABCDEFGHIJKLMNQRSTUUVWXYZ
abcdefghijklmnopqrstuvwxyz
1234567890\$c£/%# 1/2 1/4 3/4 —=+ x&@*

1.0 mm (e= .81 mm)

ABCDEFGHIJKLMNQRSTUUVWXYZ1234567890
abcdefghijklmnopqrstuvwxyz\$c£/%# 1/2 1/4 3/4 —=+ x&@*

1.5 mm (e= 1.09 mm)

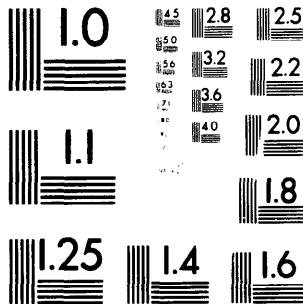
ABCDEFGHIJKLMNQRSTUUVWXYZ1234567890
abcdefghijklmnopqrstuvwxyz\$c£/%# 1/2 1/4 3/4 —=+ x&@*

2.0 mm (e= 1.37 mm)

ABCDEFGHIJKLMNQRSTUUVWXYZ
abcdefghijklmnopqrstuvwxyz
1234567890\$c£/%# 1/2 1/4 3/4 —=+ x&@*

2.5 mm (e= 1.77 mm)

ABCDEFGHIJKLMNQRSTUUVWXYZ
abcdefghijklmnopqrstuvwxyz
1234567890\$c£/%# 1/2 1/4 3/4 —=+ x&@*



200 MM

250 MM

